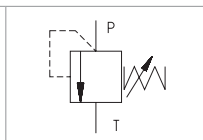

**Technical Features**

- › Excellent stability throughout flow range with rapid response to dynamic pressure changes
- › Low hysteresis, accurate pressure control and low pressure drop through CFD optimized flow paths
- › Wide pressure range up to 420 bar
- › Hardened precision parts
- › Sharp-edged steel seats for dirt-tolerant performance
- › Leak-free closing, suitable for fast cycling with long life
- › Adjustable by allen key or hand screw
- › In the standard version, the valve is zinc-coated for 1000 h protection acc. to ISO 9227

**Functional Description**

A poppet type, direct acting hydraulic relief valve in the form of a screw-in cartridge intended for use as a pressure limiting device for common hydraulic circuit protection. The spring acts on the poppet and presses it onto the valve seat. If the hydraulic pressure is below the pre-set value, the valve is closed. If the hydraulic force exceeds the pre-set value the valve opens and flow passes to the tank port until the system pressure falls below the spring pre-set value and the valve closes again.

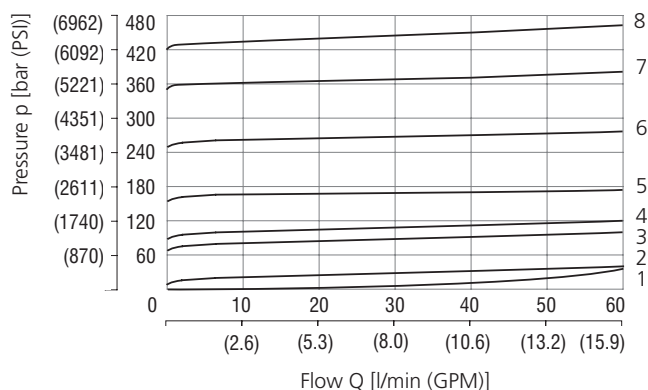
Symbol


**Technical Data**

Valve size / Cartridge cavity		7/8-14 UNF-2A / B2 (C-10-2)
Max. flow	l/min (GPM)	60 (15.9)
Max. operating pressure	bar (PSI)	420 (6090)
Max. pressure (port T)	bar (PSI)	250 (3630)
Fluid temperature range (NBR)	°C (°F)	-30 ... +100 (-22 ... 212)
Fluid temperature range (FPM)	°C (°F)	-20 ... +120 (-4 ... 248)
Weight	kg (lbs)	0.25 (0.55)

		Datasheet	Type
General information		GI_0060	Products operating conditions
Valve bodies	In-line mounted	SB_0018	SB-B2*
	Sandwich mounted	SB-04(06)_0028	SB-*B2*
Cavity details / Form tools		SMT_0019	SMT-B2*
Spare parts		SP_8010	

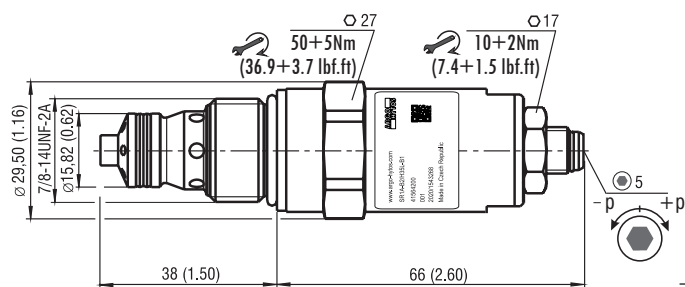
**Characteristics** measured at  $v = 32 \text{ mm}^2/\text{s}$  (156 SUS)

**Relief pressure related to flow rate**


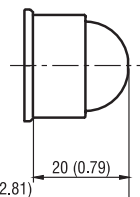
	Pressure range
8	42
7	35
6	25
5	16
4	10
3	6
2	2
1	Min. pressure setting

**Dimensions** in millimeters (inches)

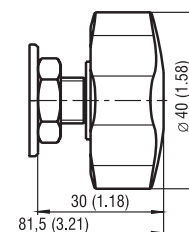
**Model S**



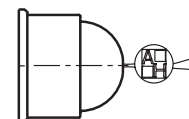
**Model T**



**Model RP**



**Model L**



**Ordering Code**

**SR1A - B2 / H**    - **B1**

**Pressure relief valve, poppet type, direct acting**

**Valve cavity**  
7/8-14 UNF (C-10-2)

**Model**  
High performance

**Pressure range**

adjustable pressure 25 bar (360 PSI)	<b>2</b>
adjustable pressure 63 bar (910 PSI)	<b>6</b>
adjustable pressure 100 bar (1450 PSI)	<b>10</b>
adjustable pressure 160 bar (2320 PSI)	<b>16</b>
adjustable pressure 250 bar (3630 PSI)	<b>25</b>
adjustable pressure 350 bar (5080 PSI)	<b>35</b>
adjustable pressure 420 bar (6090 PSI)	<b>42</b>

**Surface treatment**  
zinc-coated (ZnNi), ISO 9227 (1000 h)

**No designation**  
**V**

**Seals**  
NBR  
FPM (Viton)

**Adjustment option**

<b>S</b>	allen key (hex. 5), without protective cap
<b>T</b>	allen key (hex. 5), with protective cap
<b>RP</b>	hand screw, plastic
<b>L</b>	allen key (hex. 5), with protective cap, sealable (lockwire holes)