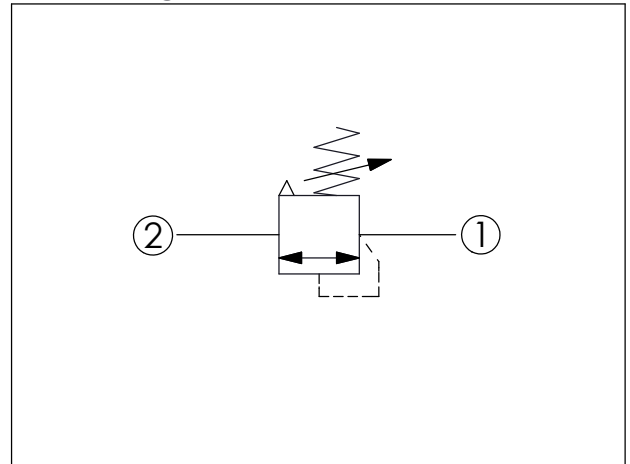
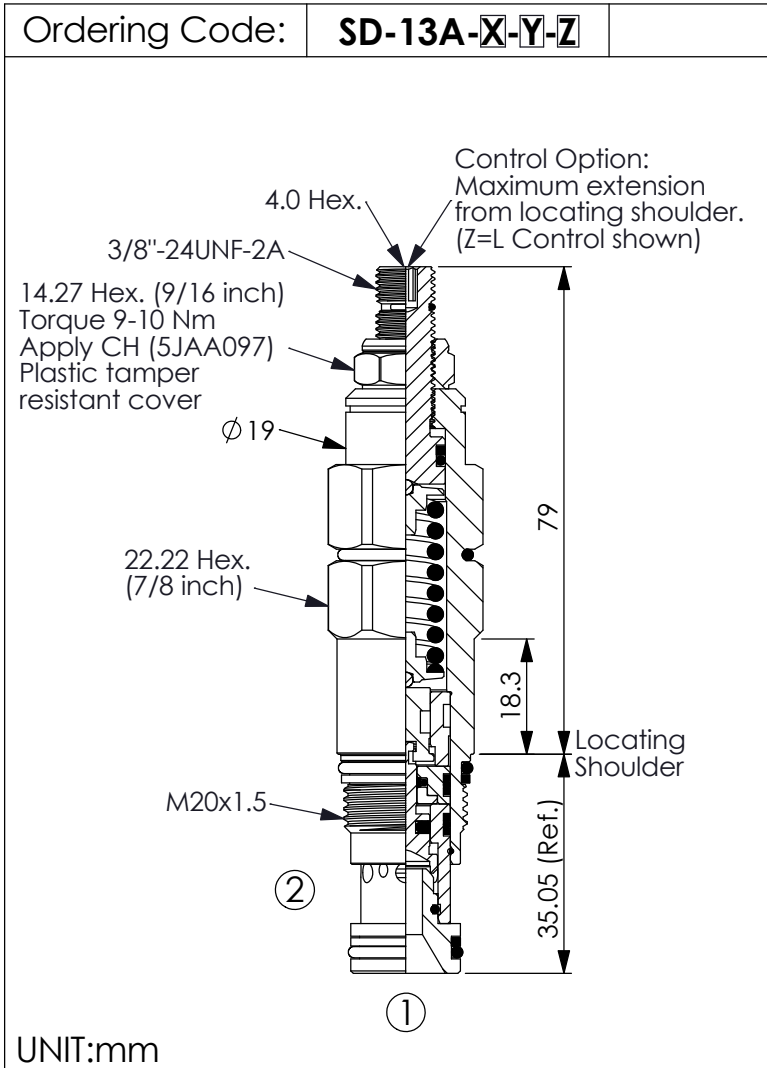
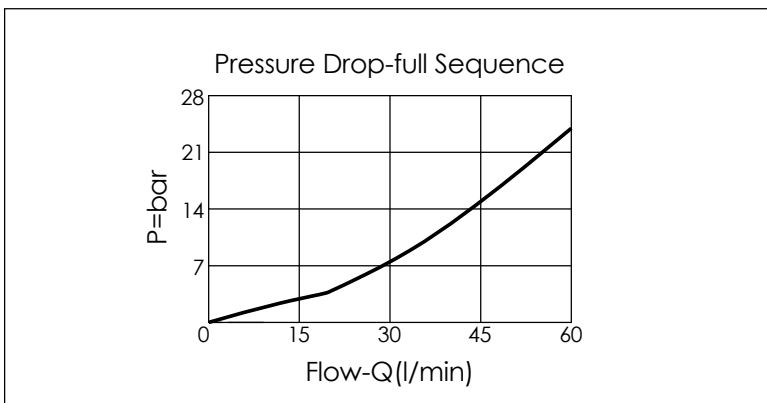


SEQUENCE VALVE (Atmospherically Referenced, Direct Acting without Reverse Flow Check)



TECHNICAL DATA		
Max. Operating pressure:	350 bar	
Rated flow:	60	l/min
Cavity-Tooling:	13A-2	
Installation torque:	40-50	Nm
Weight:	0.21 (Z=L)	kg
<ul style="list-style-type: none"> Approximately 1 drop (0.07 cc) of fluid will pass from the pilot area to the vented spring chamber every 4000 cycles. 		

X	OPERATION	
20	Standard Type	
<ul style="list-style-type: none"> Response Time-Typical (2 ms) Maximum Leakage Approximately (0.7 cc/min./70 bar) 		



Y	SPRINGS	
	ADJUSTMENT RANGES	
A	35-210 bar (70 bar Standard Setting)	
B	20-105 bar (70 bar Standard Setting)	
C	140-420 bar (140 bar Standard Setting)	
D	14-55 bar (28 bar Standard Setting)	
E	7-28 bar (14 bar Standard Setting)	
W	55-315 bar (70 bar Standard Setting)	

Z	OPTIONS	
L	Leakproof hex. socket screw.	
C	Stainless Steel Tamper Resistant Cover.	
CB	Plastic Tamper Resistant Cover	
K	Handknob with Lock Knob. (Order Code: 6ZAK001)	